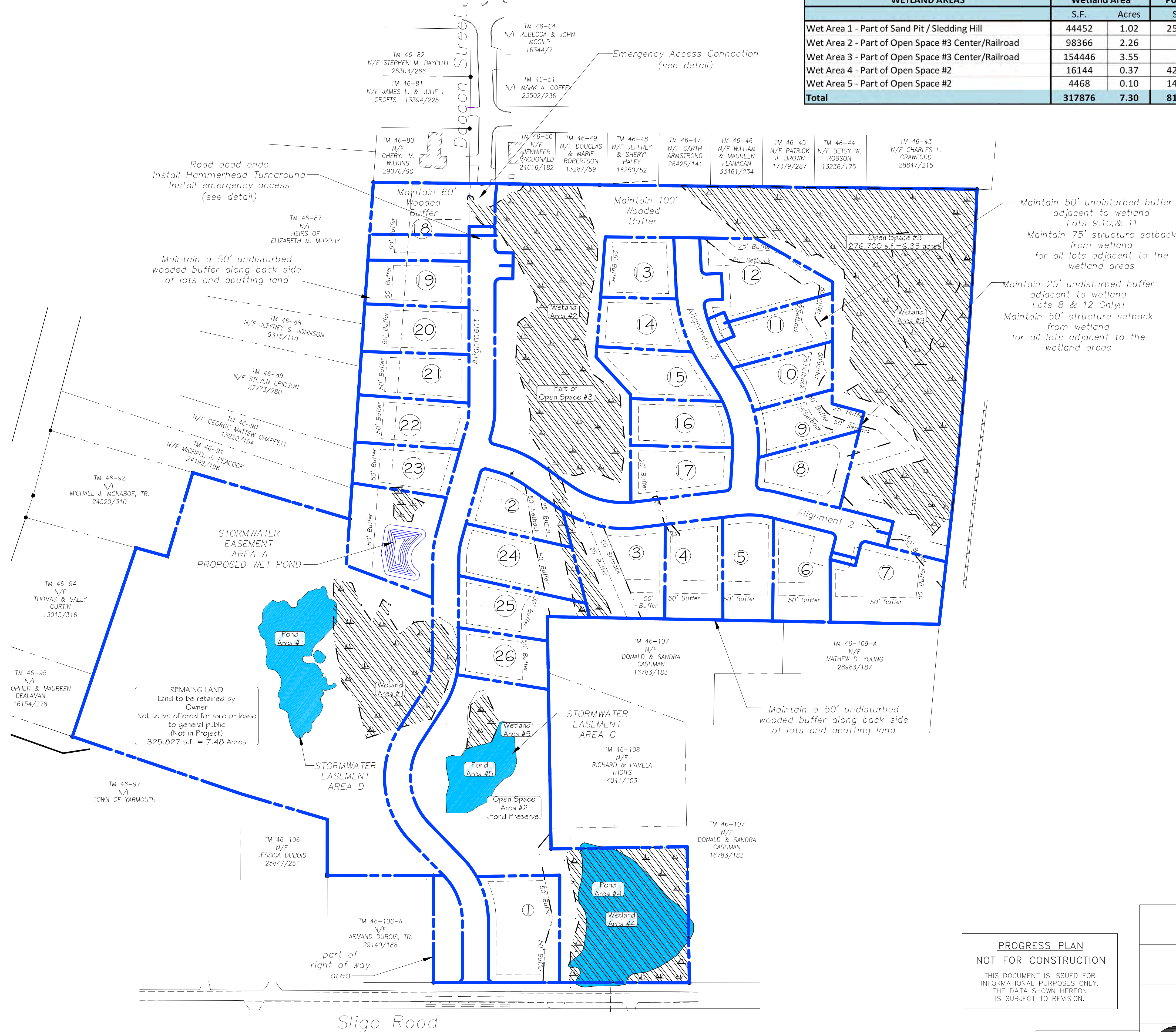
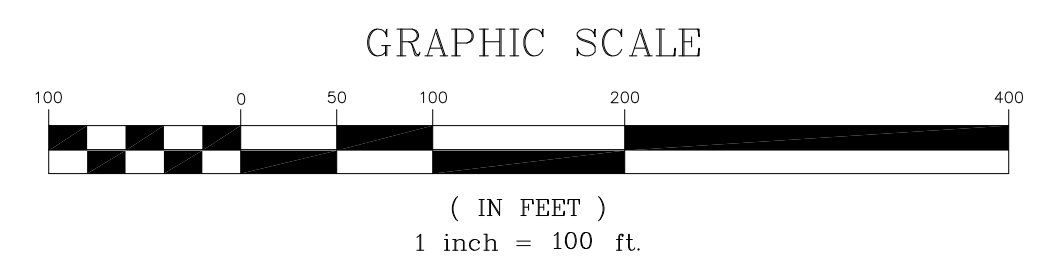


Village Run Subdivision - Sligo Road Associates LLC Areas		
Description	Land Area	
	S.F.	Acres
Road Areas		
Connector Road - Alignment #1	93250	2.14
Spur - Alignment #2	40014	0.92
Spur - Alignment #3	22726	0.52
Totals Road Areas	155990	3.58
Lot Areas		
Lot 1	28987	0.67
Lot 2	15513	0.36
Lot 3	33023	0.76
Lot 4	22099	0.51
Lot 5	26767	0.61
Lot 6	26175	0.60
Lot 7	34655	0.80
Lot 8	19653	0.45
Lot 9	16149	0.37
Lot 10	14915	0.34
Lot 11	21227	0.49
Lot 12	22890	0.53
Lot 13	20200	0.46
Lot 14	20701	0.48
Lot 15	20215	0.46
Lot 16	12473	0.29
Lot 17	16863	0.39
Lot 18	28420	0.65
Lot 19	17257	0.40
Lot 20	18587	0.43
Lot 21	18648	0.43
Lot 22	19175	0.44
Lot 23	16810	0.39
Lot 24	22952	0.53
Lot 25	19620	0.45
Lot 26	17713	0.41
Total Lot Areas	551687	12.66
Common / Open Space Areas		
Stormwater Easement Area A - Wet Pond	30274	0.69
Open Space #2 - Pond Preserve (Near Lot 26)	149282	3.43
Open Space #3 - Railroad - Center Preserve	322973	7.41
Total Open Space Areas	502,529	11.54
Grand Total	1,210,206	27.78

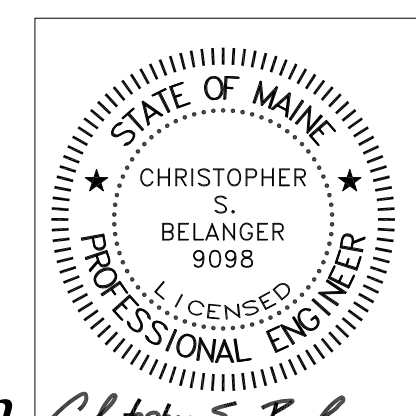
WETLAND AREAS	Wetland Area		Pond Surface Areas		Combined Areas	
	S.F.	Acres	S.F.	Acres	S.F.	Acres
Wet Area 1 - Part of Sand Pit / Sledding Hill	44452	1.02	25201	0.58	69653	1.60
Wet Area 2 - Part of Open Space #3 Center/Railroad	98366	2.26	0	0.00	98366	2.26
Wet Area 3 - Part of Open Space #3 Center/Railroad	154446	3.55	0	0.00	154446	3.55
Wet Area 4 - Part of Open Space #2	16144	0.37	42038	0.97	58182	1.34
Wet Area 5 - Part of Open Space #2	4468	0.10	14611	0.34	19079	0.44
Total	317876	7.30	81850	1.88	399726	9.18



Open Space	slopes >20%	Wetland	Pond	Upland	Total
	Acres	Acres	Acres	Acres	Acres
Sand Pit / Sledding Hill	2.2	1.02	0.58	3.68	7.48
open space 2	0	0.47	1.31	1.65	3.43
open space 3	0	5.35	0	2.06	7.41
Total	2.2	6.84	1.89	7.39	18.32



PROGRESS PLAN
NOT FOR CONSTRUCTION
THIS DOCUMENT IS ISSUED FOR INFORMATIONAL PURPOSES ONLY. THE DATA SHOWN HEREON IS SUBJECT TO REVISION.



Village Run Preliminary Subdivision Plan

Village Run Residential Development Project
Sligo Road, Yarmouth, Maine

Sligo Road Associates LLC
67 Hillside Road, Yarmouth, Maine

BELANGER ENGINEERING
CONSULTING ENGINEERS
63 Second Avenue, Augusta, Maine 04330 Ph 207-622-1462, Cell 207-242-5713

FIELD WK: CSB
DRN BY: CSB
CHD BY: CSB
DATE: 7-16-2015

SCALE: 1"=100'
JOB #: []
SS: []
FILE: []

C1

Preliminary - Not for Construction *Christopher S. Belanger*